

Instructions:

- You received a file that is known as a Live pack. This is a file with a special icon that shows that it is part of Live. The file extension is '.alp'.

- If you double-click on this pack, Live will ask you where you want to install the project folder.

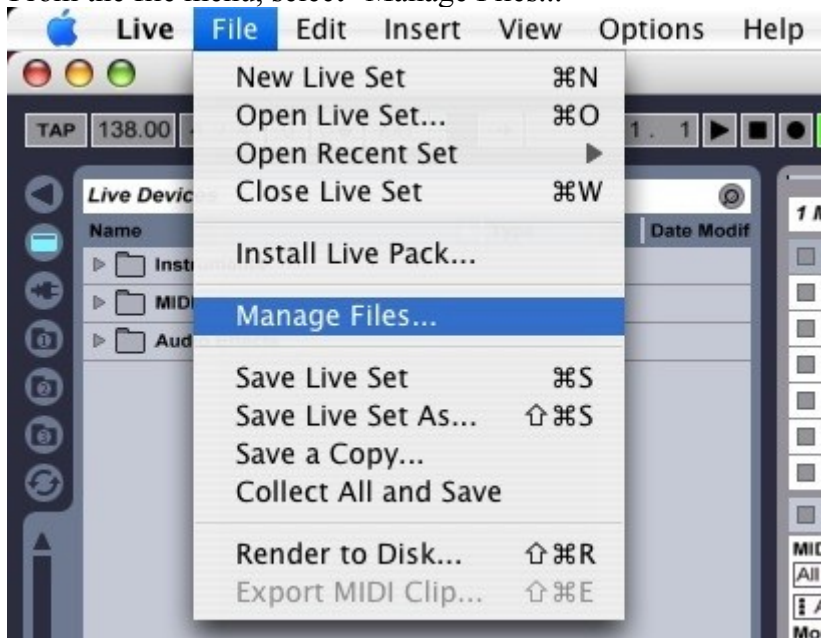
You can install it anywhere on your hard drive. I suggest that you install it on your desktop, because the project folder can be deleted after these steps. Live 7 doesn't let you install Live Packs in the library right away.

There are a few steps that you need to follow to get the presets and/or samples you received into the Live library.

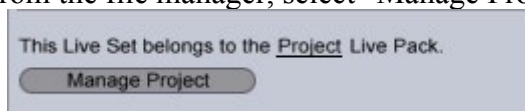
- Once installed, you are left with a project folder that contains at least 1 Live Set (.als file).

Open this file in Live.

- From the file menu, select "Manage Files..."

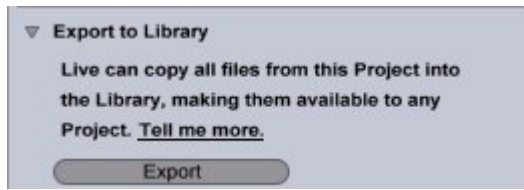


- From the file manager, select "Manage Project".



Continued on the next page....

- At the bottom of the project manager, there is an option to export the content of the project folder to the Live library. Click on the "Export" button.



The live pack has now been installed into your Live Library. Presets can be found in the device browser.

You may now delete the project folder that you unpacked. And store the .alp file (Live Pack) for safe keeping.

Where have the presets been installed?

- All the presets can be found in the Analog preset list in a folder named “Number Cruncher Free”.

Enjoy!

- **The Covert Operators**